

S3000

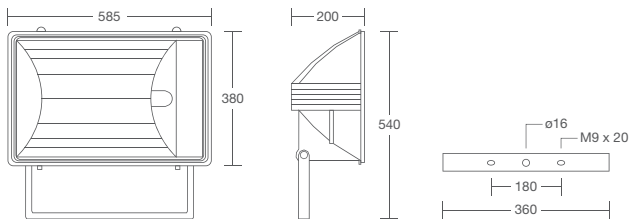


order code

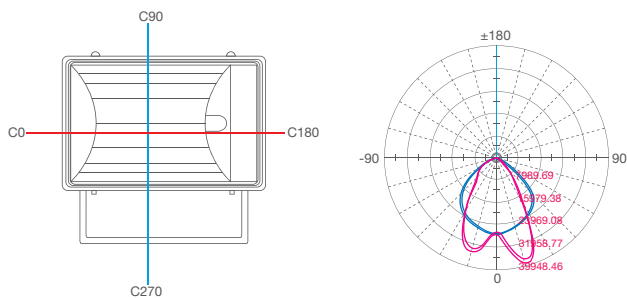
model	lamp type	lamp holder	order code
S3000 MH 1000W	tubular	E40	S3000-M1000
S3000 HPS 1000W	tubular	E40	S3000-S1000
accessories	housing material	IP rated	order code
remote control gear (MH 1000W)	steel c/w epoxy powder	IP43	S5100 UC-M1000
remote control gear (HPS 1000W)	steel c/w epoxy powder	IP43	S5100 UC-S1000
remote control gear (MH 1000W)	die-cast aluminium	IP65	S5100 UA-M1000
remote control gear (HPS 1000W)	die-cast aluminium	IP65	S5100 UA-S1000

note : S3000 Asymmetrical type floodlight is available upon request • specification is subject to change without prior notice

dimension



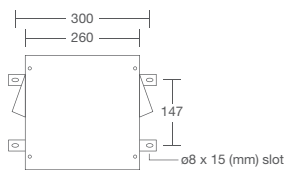
photometric curve



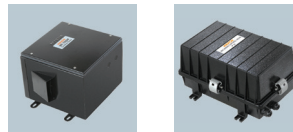
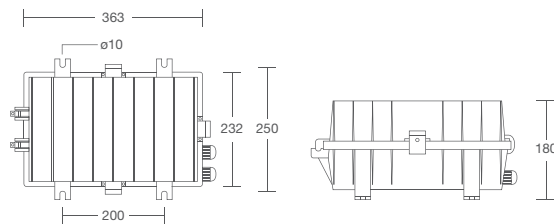
note : photometric result tested based on 85000lm MH 1000W clear tube

accessories

S5100-UC



S5100-UA



features

housing

- high pressure aluminium die-cast housing

reflector

- high purity anodized hammered finish aluminium reflector

glass

- thermal resistant tempered glass

mounting bracket

- steel mounting bracket coated with epoxy powder

technical data

ingress protection • IP65 (lamp fitting)

voltage • 220 - 240 Vac 50 Hz

lamp wattage • MH 1000W & HPS 1000W

holder type • E40 ceramic lamp holder

maximum weight • 11.6 kg

control gear weight • S5100-UC : 12.5 kg / S5100-UA : 11.5 kg

colour of housing • black